



WinCan

QGIS Plugin



Version: 0.91

Date: 27.06.2019

Table of Contents

| | |
|------------------------------|-------|
| 1 General overview | - 3 - |
| 2 Install plugin | - 3 - |
| 3 Main Screen | - 3 - |
| 4 Connection to WinCan VX | - 4 - |
| 5 Data presentation | - 4 - |
| 6 Data selected in WinCan VX | - 4 - |
| 7 Transfer to WinCan VX | - 4 - |
| 8 Reinitialize connection | - 5 - |
| 9. Possible errors | - 5 - |

1 General overview

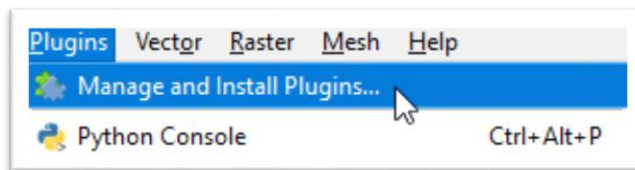
VX Plugin is a solution that gives you a possibility to integrate VX data with an open environment of QGIS. Using this extension you are able to download data, check its attributes, manage them and transfer back to WinCan VX.

Remember – Due to the fact that WinCan VX is a 32 bit program it is necessary to have QGIS 32bit.

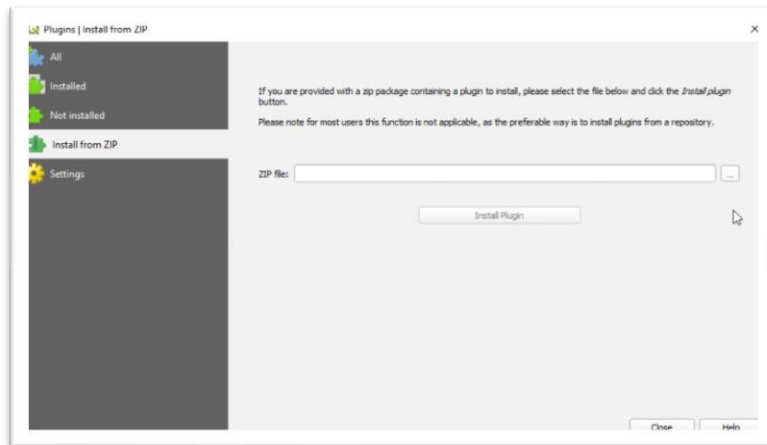
2 Install plugin

To have a possibility of using our product all you need to do is installing it. There are two possibilities:

- Install using official QGIS plugin repository:



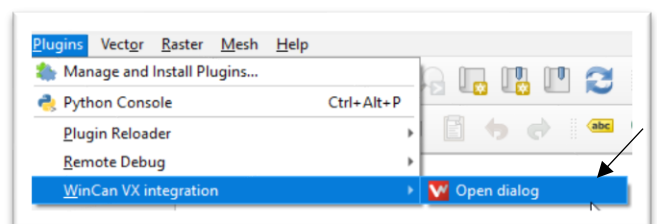
- Install using .zip archive:



When its done you are able to start using plugin.

3 Main Screen

The first thing you need to do is to start WinCan VX. After that you can easily open QGIS and from the plugins tab or using dedicated button open plugin main window:

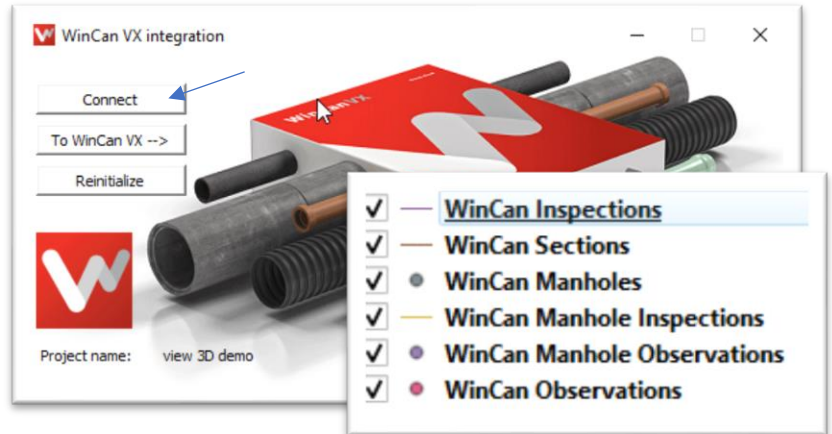


1. Open dialog
 2. Connect to WinCan VX
 3. Transfer to WinCan VX
 4. Reinitialize connection
- 
- The logo for WinCan VX, featuring a red square with a white 'W' and a green 'VX' next to it, with a circular arrow icon to the right.



As a next step you need to establish

connection with WinCan VX. To do that click Connect button on a main window or on the toolbar. As a consequence you will see 6 shapefiles added to your QGIS canvas, project name displayed and 2 additional buttons that are now activated.



First feature that plugin has got is a possibility to look at the actual view of the map. This data has

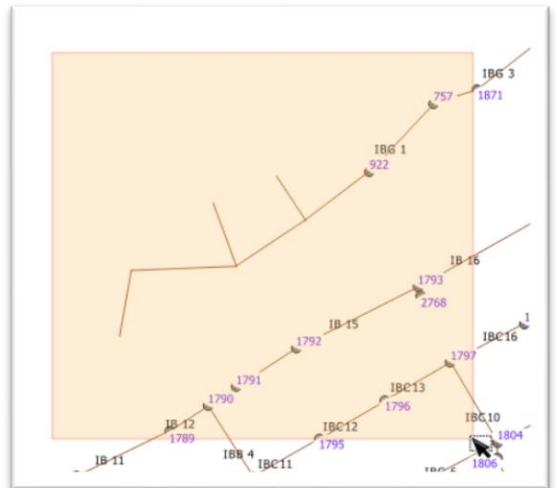
been downloaded from WinCan VX during connection. Right click on the layer gives a possibility to open attribute table and look at grid data like: manhole name, location etc. You are also able to look at this table by selecting some features.

In case of a need to find a specific section or manhole you have a possibility to select them in the

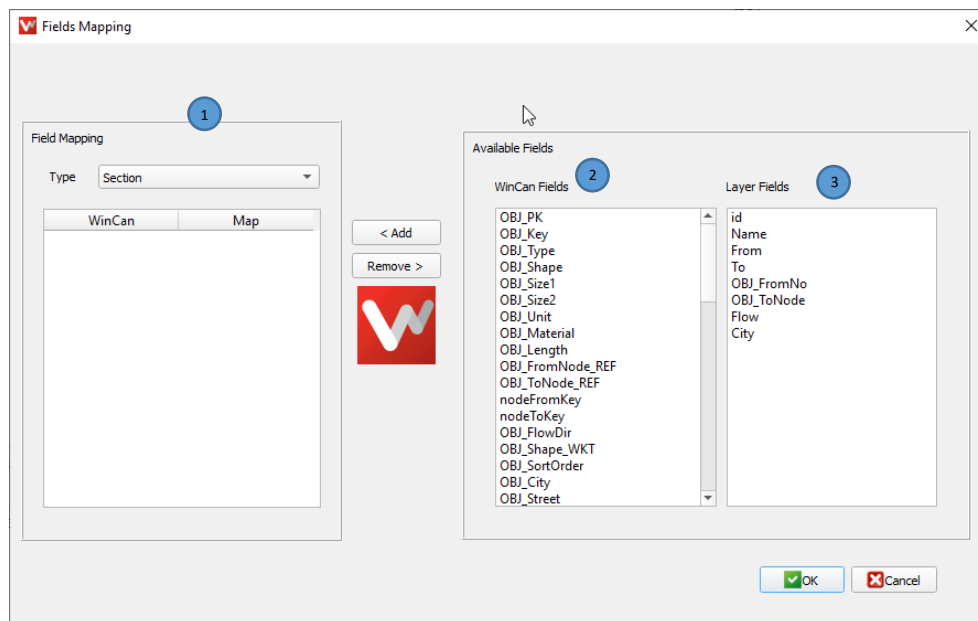
In case of a need to find a specific section or markers, you have a possibility to select them in the WinCan VX and they will be automatically selected and presented in QGIS.

After receiving a shape data from WinCan there is a

After receiving a shape data from WinCan there is a possibility to send some additional data back to WinCan VX. If you have some layer (other than the WinCan ones) you can select some features that you want to add to your project:



Next click  on the main window or  from the toolbar and define a field mapping:



To do that you have to choose:

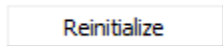
- Data type (1)
- WinCan reference field (2)
- Layer field (3)


For every pair of fields click add and at the end accept using OK.

This is all you need to do transfer data to WinCan VX. As a result you will see this features on the WinCan layers on both WinCan VX and QGIS.

8 Reinitialize connection

If your connection has been lost, or you have changed WinCan project you would need to

reconnect QGIS with WinCan VX. You are able to do that by pushing  button on

a main window or  from a toolbar. All features will disappear and connection will be established from scratch.

9. Possible errors

1. No pythonnet installed:

If this error occurred you have to install pythonnet from PythonConsole in QGIS by typing:

```
from pip._internal import main as pipmain; pipmain(['install', 'pythonnet'])
```

2. Instead of Plugin toolbar you see :

Start WinCan VX and restart QGIS. You have to have WinCan VX opened before you start QGIS.