

Estimate new MBES Coverage

Rationale:

This tool creates a vector polygon output file which shows the estimated coverage of a MBES system predicted to be acquired over the area. It uses low resolution bathymetric data, such as GEBCO as a guide to swath width. It is not an exact representation of the actual coverage but a guide to placing tracklines.

Usage:

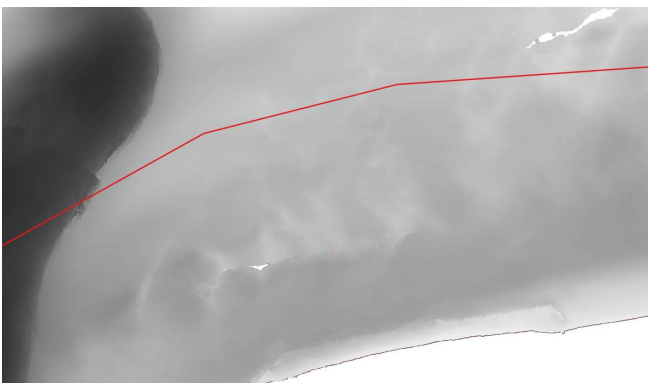
This tool requires three inputs:

- A background bathymetry grid to be used for approximate depth estimation. This bathymetry file must be in a meter projection such as UTM or Mercator and not geographic coordinates.
- A trackline shapefile of the suggested survey line. It can be a single line or multiple lines.
- The total swath angle for the MBES. A default value of 140° is provided but can be changed by the user.

Output is a single polygon vector shapefile and its default filename is the same as the trackline filename with “_coverage” added to the name. Format output is .shp (plus its associated companion files).

Example:

Bathymetry data



Polygon coverage (140°)

