

# Tree Removal



## Rationale:

This simple tool filters a bathymetry grid by removing spurious depth points. The criteria for being a spurious depth value is its value being more than a threshold value away from the local median value.

## Usage:

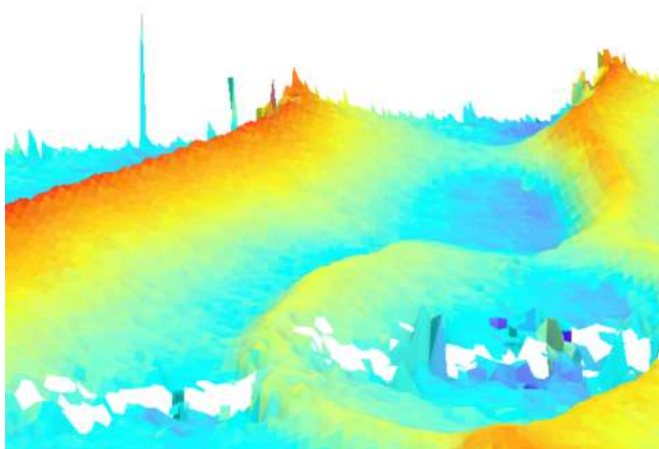
There are two parameters required for this tool:

- The radius of a circle of an area in pixels from which a median value is calculated.
- A threshold value of the maximum deviation from the median surface which is allowed

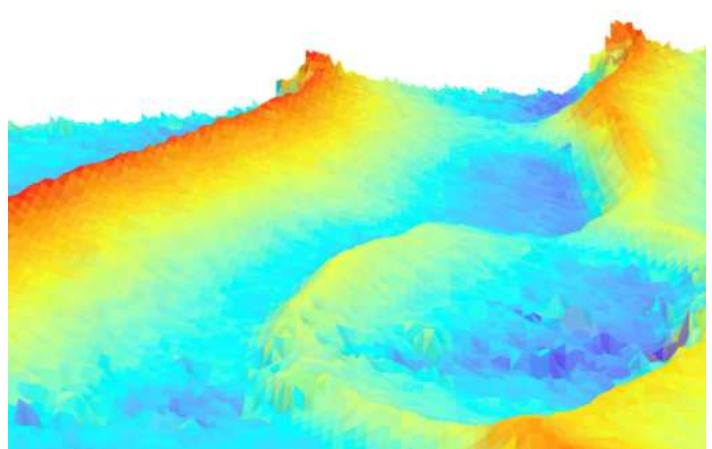
One output is a raster file and has default filename of “\_treeFilt” plus the radius and threshold used for the filter. A second output is a slope raster file and has default filename of “\_treeFilt\_slope” plus the other parameters. This is to improve the visual appearance of the bathymetry.

## Examples:

3D image before filtering



3D image after filtering



Map example (before and after).

