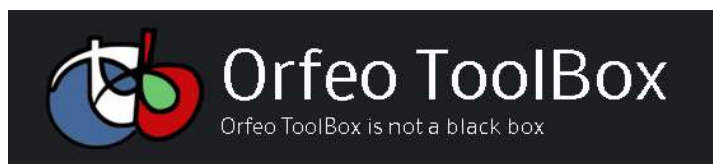


OTB Installation in QGIS



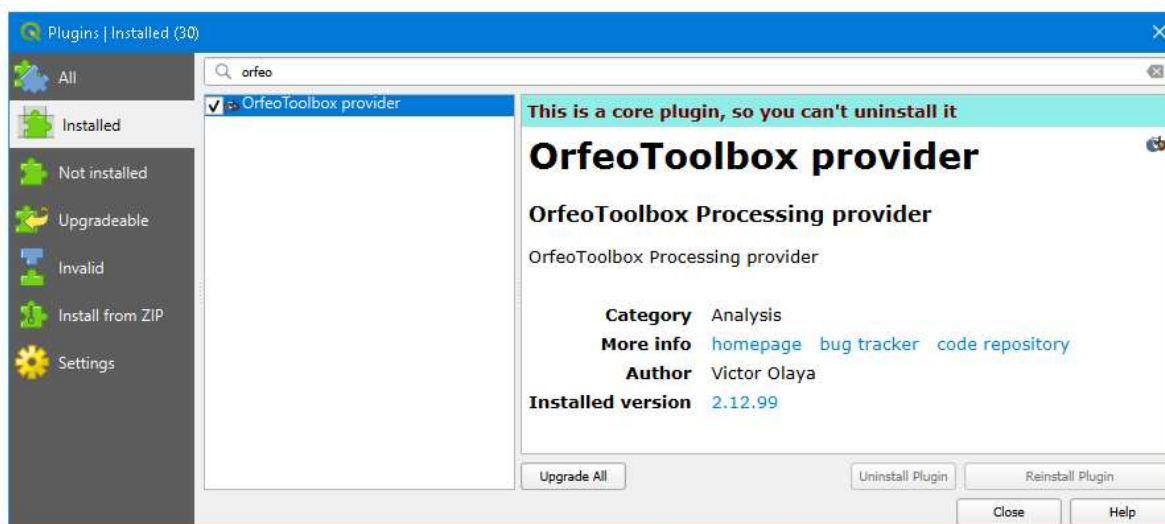
Rationale:

The Orfeo ToolBox (OTB) is required by several tools and is useful in its own right and needs to be installed alongside QGIS



Installation:

- Download the appropriate installation software for your machine from:
<https://www.orfeo-toolbox.org/download/>
- Unzip and Install the software to some user-controlled disk space (e.g. Windows documents)
- Take note of the directory where placed,
e.g. C:/Users/tlb/Documents/Software/OTB-9.1.0-Win64/lib/otb/applications
- In QGIS **Plugins – Manage and Install Plugins... - Installed**
- Search for “orfeo”
- Tick the Orfeo Toolbox provider



- Click Close
- In QGIS **Settings – Options – Processing – Providers – OTB**
- Double click the “OTB application folder” and change it to the /lib/otb/applications folder
e.g. C:/Users/tlb/Documents/Software/OTB-9.1.0-Win64/lib/otb/applications
- Double click the “OTB folder” and add the main folder
e.g. C:/Users/tlb/Documents/Software/OTB-9.1.0-Win64
- Click on OK.

